



# GAT MONTHLY MEMBERSHIP PROGRESS REPORT

Results as of: 10/31/2022

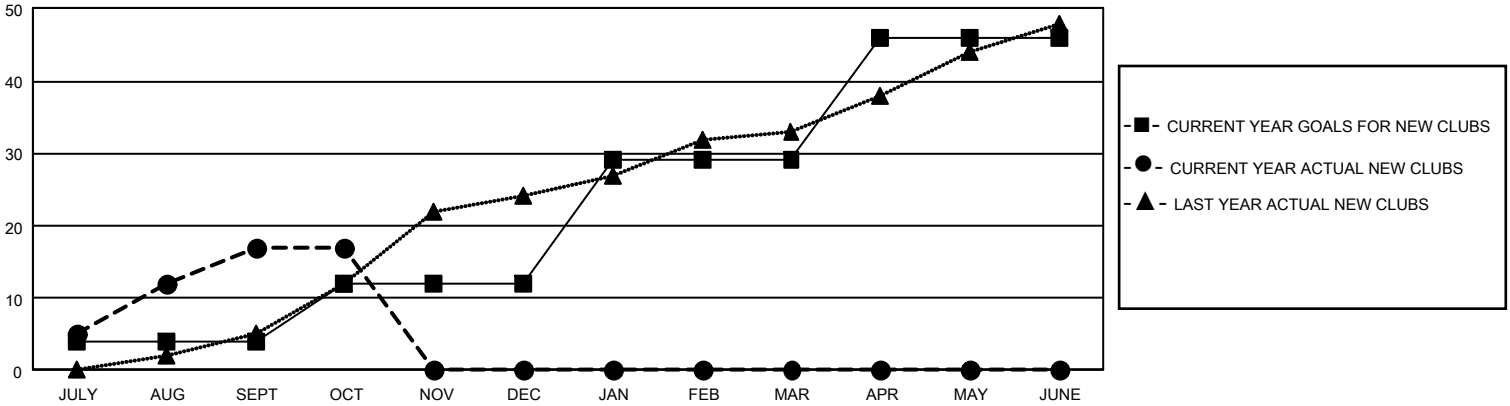
## GAT Constitutional Area 7

REPORT DOES NOT INCLUDE CLUBS IN UNDISTRICTED AREAS.

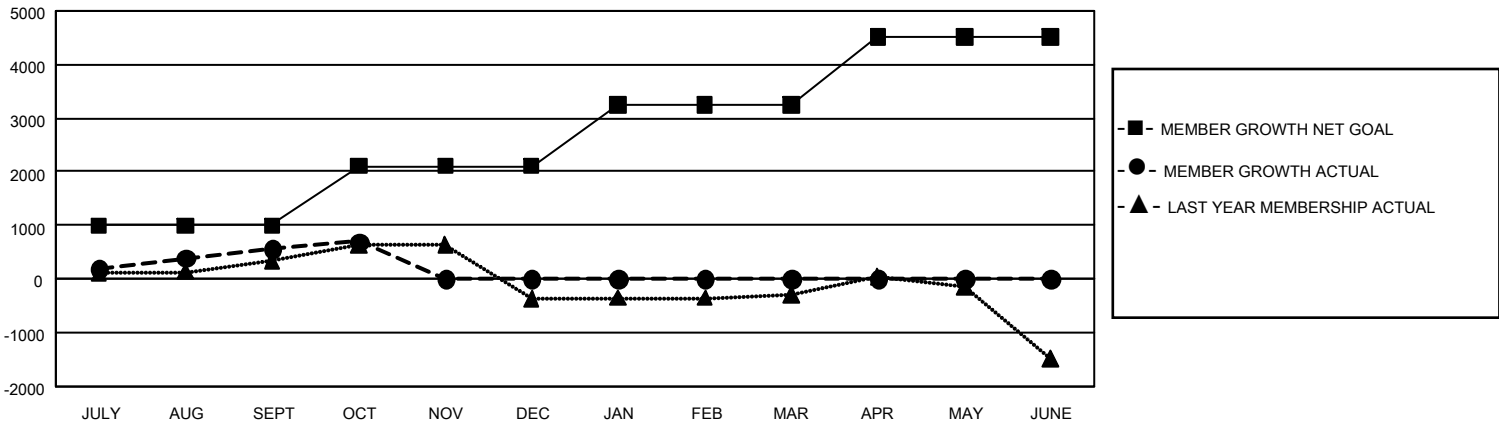
Clubs			
RESULTS FOR 2022-2023			
QUARTER	NEW CLUB GOAL	NEW CLUBS	DROPPED CLUBS
JULY/AUG/SEPT	12	17	13
OCT/NOV/DEC	24	0	2
JAN/FEB/MAR	51	0	0
APR/MAY/JUNE	51	0	0

Members			
RESULTS FOR 2022-2023			
QUARTER	MEMBER GROWTH NET GOAL	MEMBER GROWTH ACTUAL	DROPPED MEMBERS ACTUAL (including transfers)
JULY/AUG/SEPT	996	1,894	990
OCT/NOV/DEC	1105	520	350
JAN/FEB/MAR	1149	0	0
APR/MAY/JUNE	1270	0	0

GOALS AND ACTUAL NEW CLUBS CUMULATIVE



GOALS AND ACTUAL MEMBERS CUMULATIVE



DROPPED CLUBS: 15	
<b>DROPPED MEMBERS</b>	
DECEASED	193
CLUB CANCELLED	0
OTHER	1,150
<b>TOTAL</b>	<b>1,343</b>

673 CLUBS OF 1,860 ADDED 1 OR MORE NEW MEMBERS

[CLICK HERE FOR CUMULATIVE MEMBERSHIP DATA](#)

GENDER DISTRIBUTION	
MALE	24,880 (58.11%)
FEMALE	17,923 (41.86%)
NON BINARY	4 (0.01%)
PREFER NOT TO ANSWER	8 (0.02%)
<b>TOTAL FAMILY UNIT MEMBERS</b>	<b>7,421</b>
<b>FAMILY MEMBERS PAYING HALF DUES</b>	<b>4,027</b>